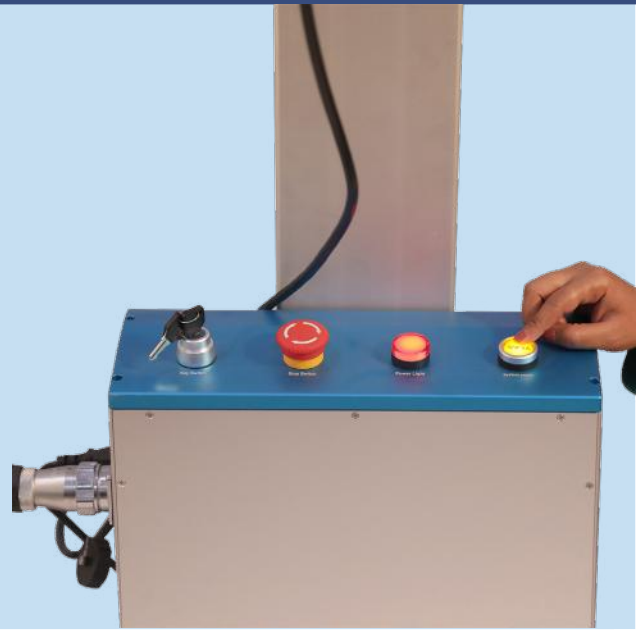




Stellar CO2 Laser SC20i



Introduction:

Our patented based exclusive Stellar CO2 laser printer is a gas laser marking printer that are based on carbon dioxide gas mixture clubbed with TEC cooling system. Our CO2 Laser Printer illustrate high accuracy and concise precision that are used for permanently marking on wide range of products. It operates with a wavelength of 10.6um/9.3um and lift a precise laser beam spot size with upmost sharpness and excellent quality. It is ideal for coding high density packaging material such as metals and plastics.

Application

Targets: Stellar CO2 Laser Printer can be used on wide range of targets like Medical devices, plastic, metals, food packages, electrical appliance, etc.

Industries

Stellar CO2 Laser Printer is widely used in industries like, Automotive, Electronics, FMCG, Electrical appliances, Packaging industries, Healthcare, Retails, Ceramics, Beverages, etc.



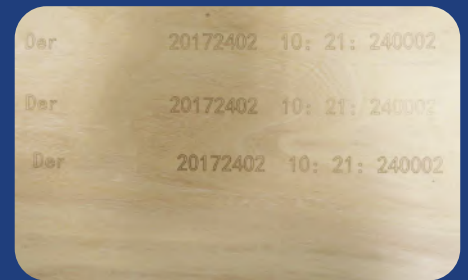
www.isunjet.com
Info@isunjet.com

CALL NOW:

+91-8929 959 853

Features:

- ◆ Ultrahigh accuracy and precision with stable power output
- ◆ The chassis and touch screen are integrated designed. It's sealed and dust proof
- ◆ The chassis case is made of stainless steel. It helps to dissipate heat
- ◆ Pollution free, noise free and no usage of consumable materials
- ◆ Enabled with TEC cooling system, that control environment temperature while working
- ◆ Used for various applications like printing dates, price, batch linear & data matrix barcodes, logos, graphics, etc
- ◆ Customized control system
- ◆ Super long service life up to 8-10 years
- ◆ Easy to operate and best stability while working
- ◆ Negligible maintenance required



Technical Specification:

Laser Wavelength	10.6um/9.3um (Optional)
Laser Power	10W/30W/60W
Laser Type	C02 RF Metal laser
Refrigerate Style	Air - cooled
Line-Width	0.02mm
Min Font Height	0.3mm
Markable Depth	0.04mm (Depending on object material)
Operation System	Computer software control or manual programmer control
Printable Content	English, digit, graph, series number, barcodes etc.
Working Area	70X70mm, 110X110mm, 160X160mm (Optional)
Interface	Ethernet, USB, RS232, Multiple definition I/O
Marking Speed	0 - 150m/minute
Power Supply	Up to 1000W



www.isunjet.com
Info@isunjet.com

CALL NOW:
+91-8929 959 853